



Schweizerische Eidgenossenschaft
Confédération suisse
Confederazione Svizzera
Confederaziun svizra



GDK Schweizerische Konferenz der kantonalen Gesundheitsdirektorinnen und -direktoren
CDS Conférence suisse des directrices et directeurs cantonaux de la santé
CDS Conferenza Svizzera delle direttrici e dei direttori cantonali della sanità

Testing and Certification

the Swiss approach

Adrian Schmid

Head of eHealth Suisse

Swiss Coordination Office for eHealth

www.e-health-suisse.ch



EPR
Electronic
Patient Record

ehealthsuisse

Meine Gesundheitsinfos.
Zur richtigen Zeit am richtigen Ort.



Koordinationsorgan
Bund-Kantone

A federal republic with 26 health regions



Cantonal Level

- Establish “eHealth” in the regional healthcare system.



Federal Level

- National legal framework for common rules, standards and infrastructure.

eHealth Suisse – national coordination since 2008

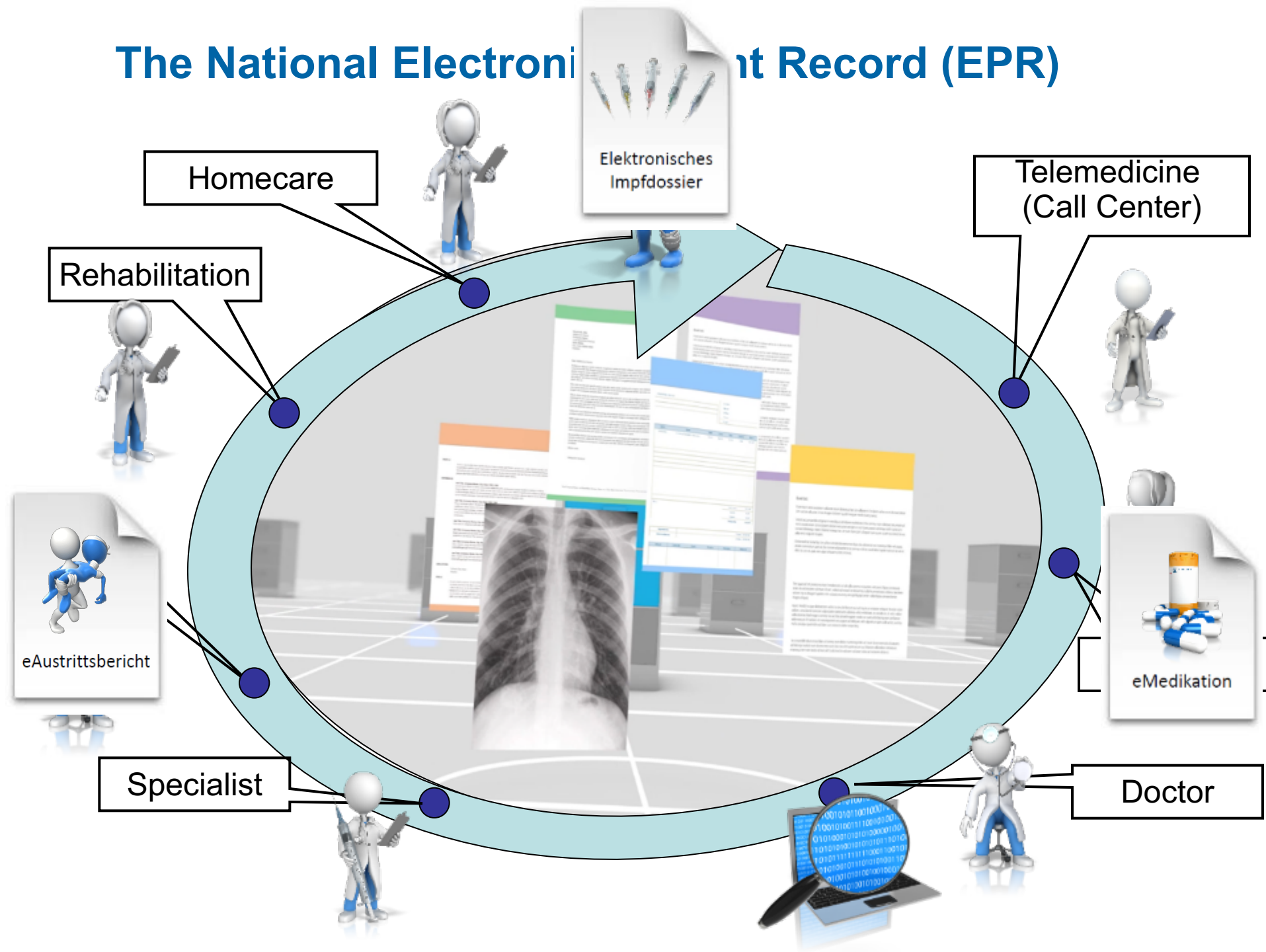


- Plan for the implementation of the „eHealth Strategy for Switzerland“
- Definition of an architecture and of standards;
- Coordination between cantonal projects;
- Establish a technical “reference environment” for testing
- ...
- ...

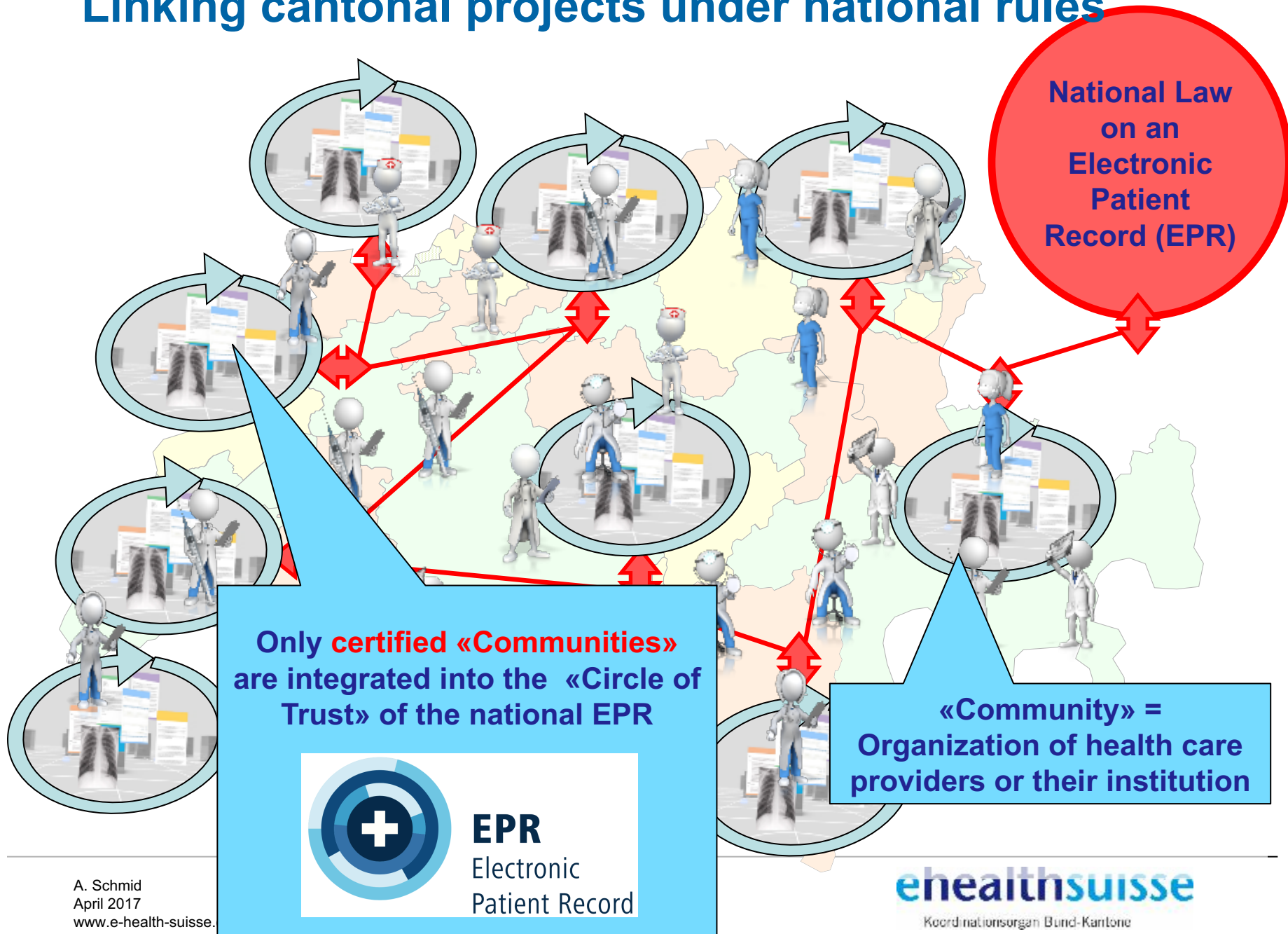
- ✓ **The project**
- ✓ **Services and IHE profiles**
- ✓ **Testing strategy**
- ✓ **Testing: Tools and plans**

The project

The National Electronic Patient Record (EPR)



Linking cantonal projects under national rules



The EPR-Law is valid by April 15th 2017

Transition period for health professionals until they have to be connected to a «Community»:

- Hospitals: 3 years (April 2020);
- Nursing homes: 5 years (April 2022);
- Outpatient care: Voluntary
- Citizens / patients: Voluntary



Services and IHE profiles

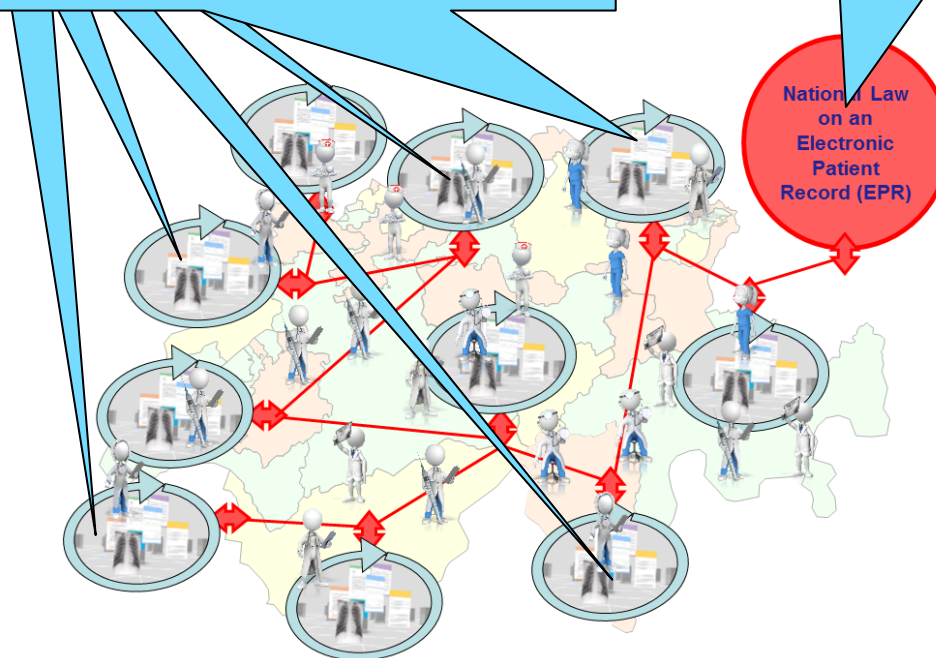
Decentral and central services

Community Services

- Patient Identification
- Health Professional Identification
- Access rights
- Document Repositories
- Document Registries
- Patient Portal
- Health Professional Portal

Central Services

- Unique Patient Number
- Community Index
- Health Care Provider Index
- Metadata Index





IHE Integration Profiles

IT-Infrastructure and Radiology Technical Framework
XCA-(-I) Cross-Community Access XCA (-Imaging)
XCPD Cross-Community Patient Discovery
XUA Cross Enterprise User Assertion
HPD Healthcare Provider Directory
XDS(-I).b Cross-Enterprise Document Sharing (-Imaging)
PDQ / PIX Patient Demographics Query, Patient Identifier Cross-referencing
ATNA/CT Audit Trail and Node Authentication, Consistent Time
SVS Sharing Value Sets
ITI Suppl XDS Metadata Update
XDM Cross-Enterprise Document Media Interchange

National Extensions
CH:ATNA Swiss Requirements on ATNA, XDS.b and CT for Audit Trail Consumption
CH:PIX Swiss Requirements on PIXv3
CH:PDQ Swiss Requirements on PDQv3
CH:PIDD Swiss Requirements on HPD for Replication
CH:XCPD Swiss Requirements on XCPD for Cross-Community Patient Discovery
CH:XUA Swiss Requirements on XUA for XDS, ADR and PPQ

National Integration Profiles
CH:ADR Authorization Decision Request
CH:PPQ Privacy Policy Query

*Primary Systems can reference the same actors as a Health Professional Portal

IHE Integration Profiles

IT-Infrastructure and Radiology Technical Framework

XCA-(-I)	Cross-Community Access XCA (-Imaging)
XCPD	Cross-Community Patient Discovery
XUA	Cross Enterprise User Assertion
HPD	Healthcare Provider Directory
XDS(-I).b	Cross-Enterprise Document Sharing (-Imaging)
PDQ / PIX	Patient Demographics Query, Patient Identifier Cross-referencing
ATNA/CT	Audit Trail and Node Authentication, Consistent Time
SVS	Sharing Value Sets
ITI Suppl	XDS Metadata Update
XDM	Cross-Enterprise Document Media Interchange

National Extensions

CH:ATNA	Swiss Requirements on ATNA, XDS.b and CT for Audit Trail Consumption
CH:PIX	Swiss Requirements on PIXv3
CH:PDQ	Swiss Requirements on PDQv3
CH:PIDD	Swiss Requirements on HPD for Replication
CH:XCPD	Swiss Requirements on XCPD for Cross-Community Patient Discovery
CH:XUA	Swiss Requirements on XUA for XDS, ADR and PPQ

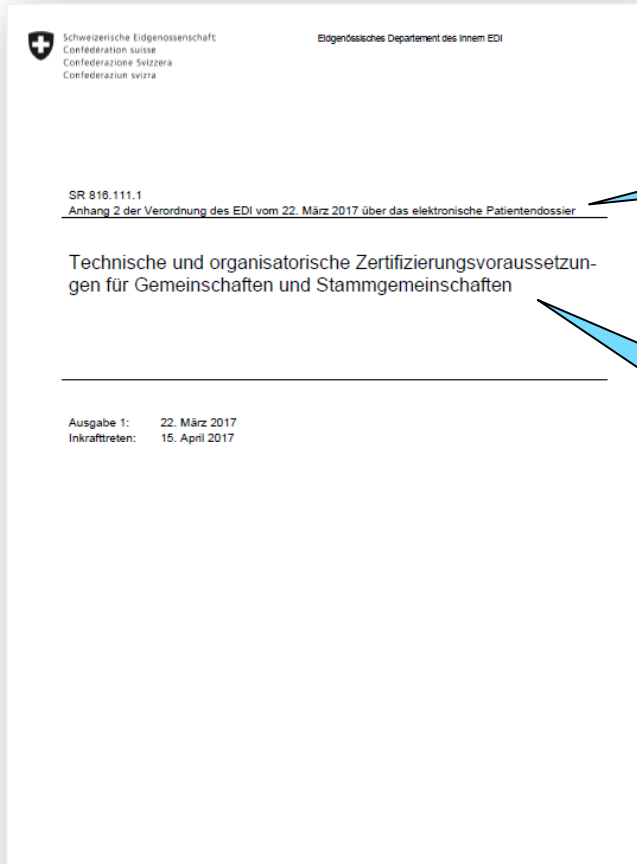
National Integration Profiles

CH:ADR	Authorization Decision Request
CH:PPQ	Privacy Policy Query



Testing strategy

EPR-Law defines the transactions for communities



“Technical and organizational certification requirements for communities”

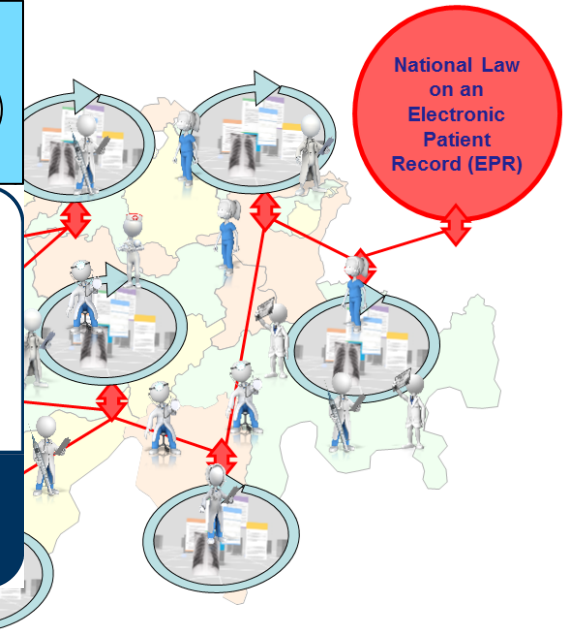
Deployment-Certification of communities



EPD
elektronisches
Patientendossier

Zertifiziert nach Bundesgesetz über
das elektronische Patientendossier

**National Law
on an
Electronic
Patient
Record (EPR)**



Testing: Tools and plan

From unbinding “testing” to “certification”

Step 1

Communities (or their providers) are encouraged to participate at the IHE CAT

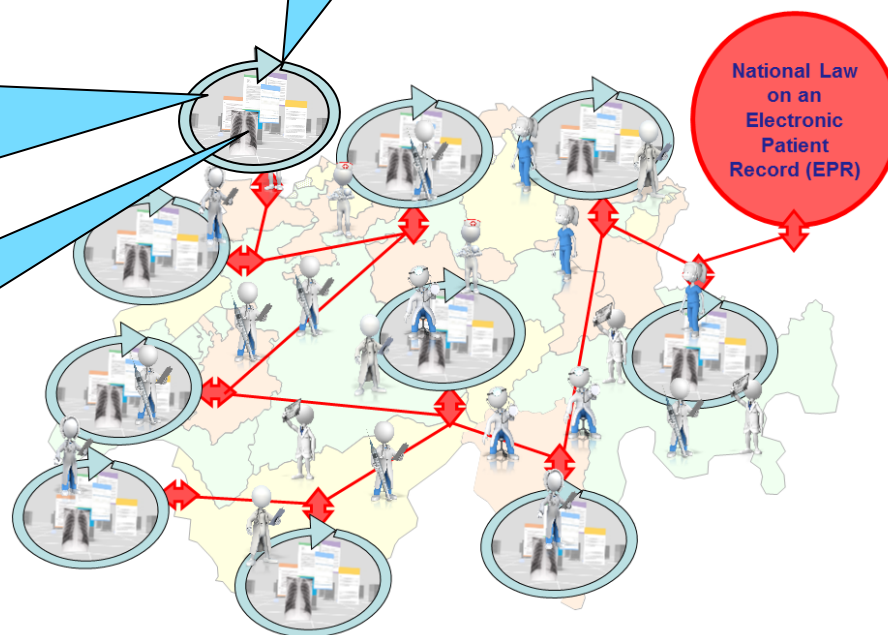
Step 2

A “reference environment” is being established to allow communities a non binding testing (with EPD-Projectathon in September 2017)



Step 3

A defined section of the “reference environment” is handed over to the certification body for the formal certification-process



Summary



EPD
elektronisches
Patientendossier

Zertifiziert nach Bundesgesetz über
das elektronische Patientendossier

Testing / Certification



Preparatory work in the communities (political, organizational, technical provider(s), etc.)



Setting up the “reference environment”
with IHE Services



Starting unbinding online-testing for communities



On-site-testing (EPD-Projecathon, 25th to 29th of
September 2017 in Bern)



Handing over a “Certification Environment” to the
official certification body



Start certification of the first communities
(around mid 2018)





Thank you!

PFNSCHI - CARTOON