

The IHE logo consists of the letters 'IHE' in a bold, dark blue, sans-serif font. A vertical line is positioned to the right of the letters, separating them from the tagline.

IHE

Integrating
the Healthcare
Enterprise

Strategic Vision on the Information Exchange Testing Continuum

Alexander Berler
IHE Services Director

Eric Poiseau
IHE-Europe Technical Manager

Testing of Interoperability is about:

- *Testing Tools and Test Plans*
- *Testing Processes*
 - A culture of testing

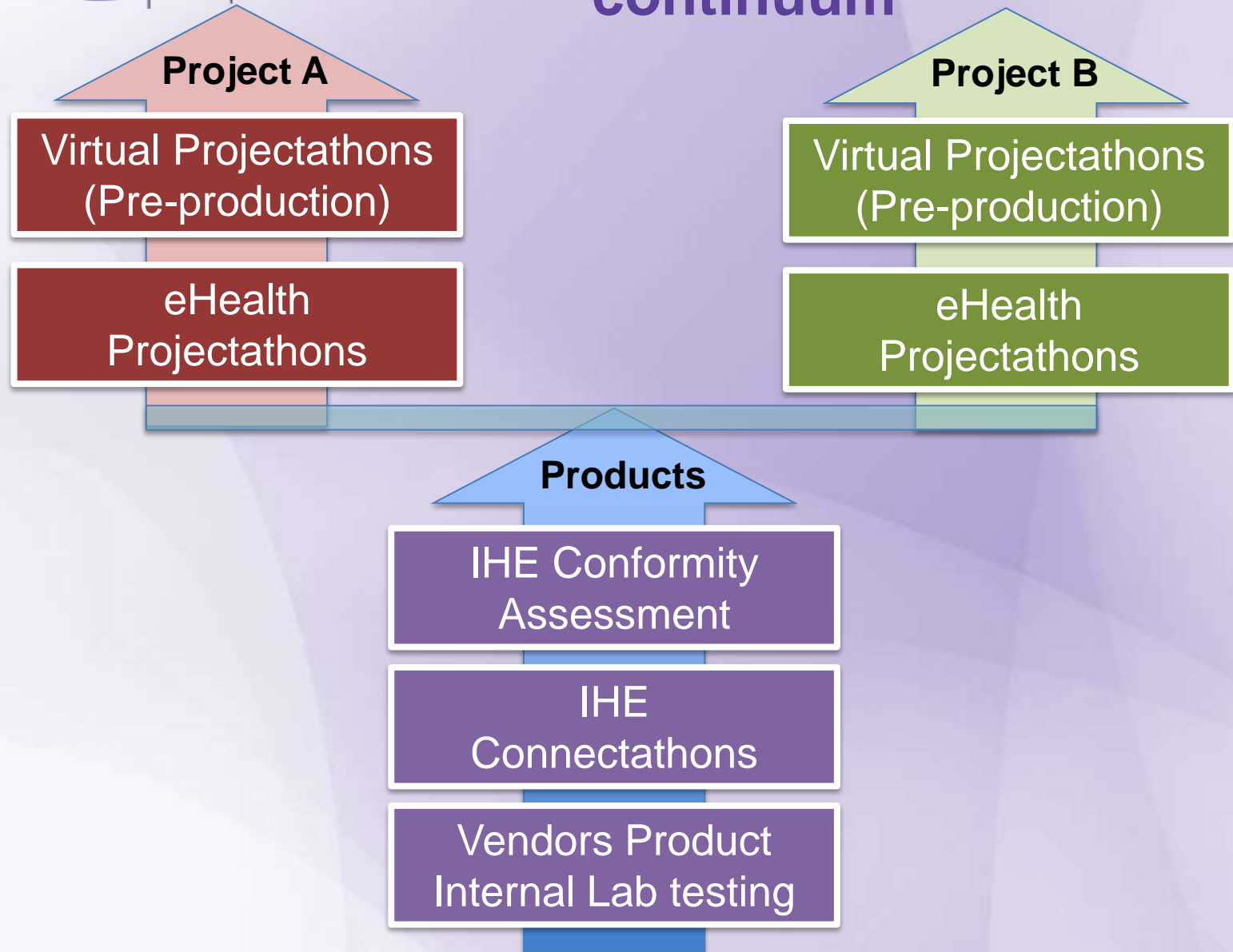
eHealth deployment continues to struggle with achieving quality in interoperability

A large scale eHealth deployment without an adequate testing strategy is at risk

The central role of the Gazelle Platform



Overview of overall testing continuum



- Need:
 - Validate product compliance to profiles and underlying standards
 - Continuous integration process
 - Quality assurance
 - Product sustainability and market acceptance
- Examples:



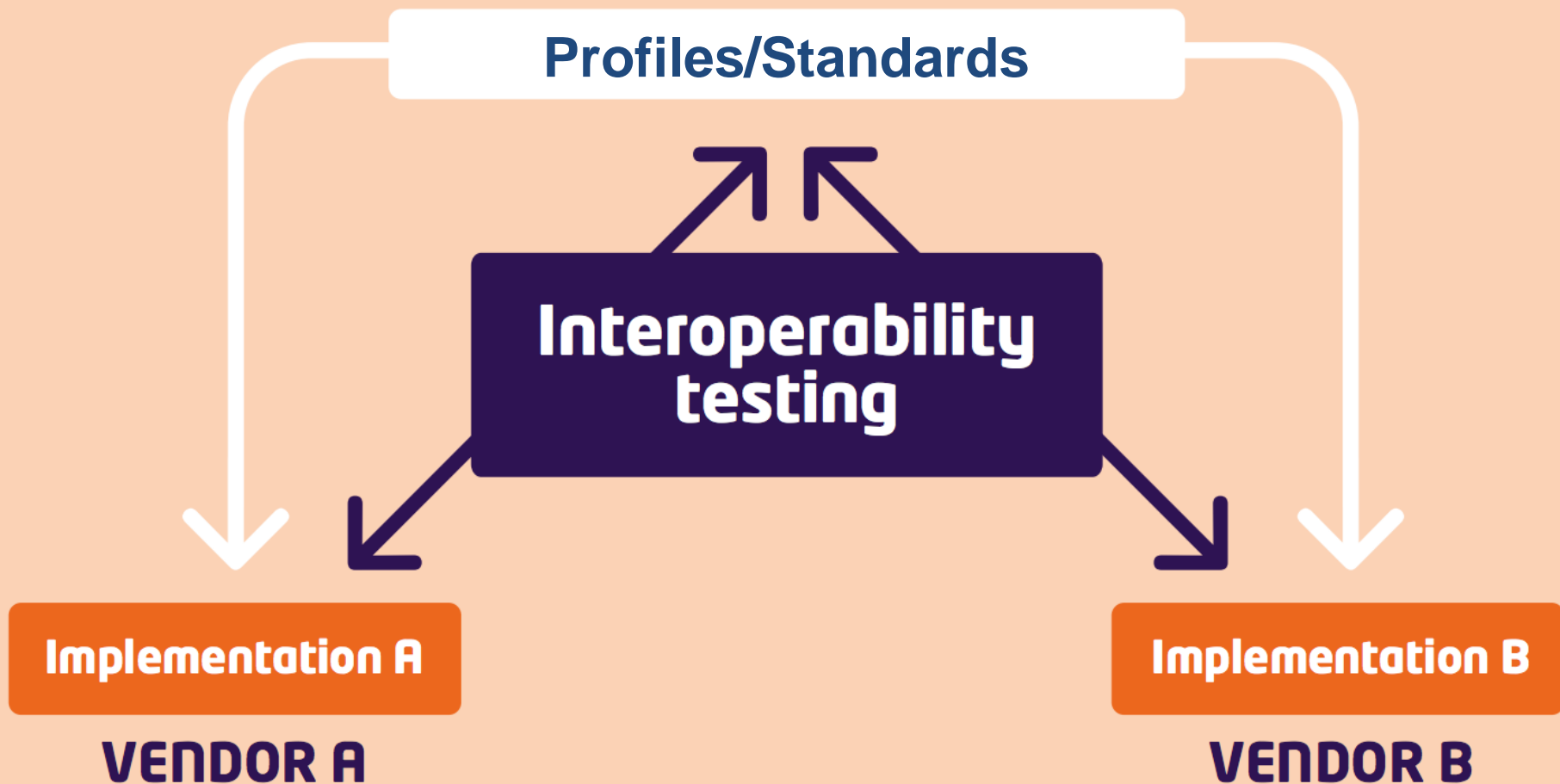
IHE Connectathons

→ *Connectivity Marathons*

- Open invitation to vendor and other implementers community
- Advanced testing tools (GAZELLE, a GITB platform)
- Testing organized and supervised by IHE technical management team and monitors
- Thousands of cross-vendor tests performed
- Results recorded and published



What is the Connectathon ?





Venice 2017

~370

Participants

90

Companies

300

engineers from
participating
organizations

500+

Delegates in
parallel events

60

monitors

3300

tests
performed

115

systems



SAVE the DATE
for the next connectivity test marathon

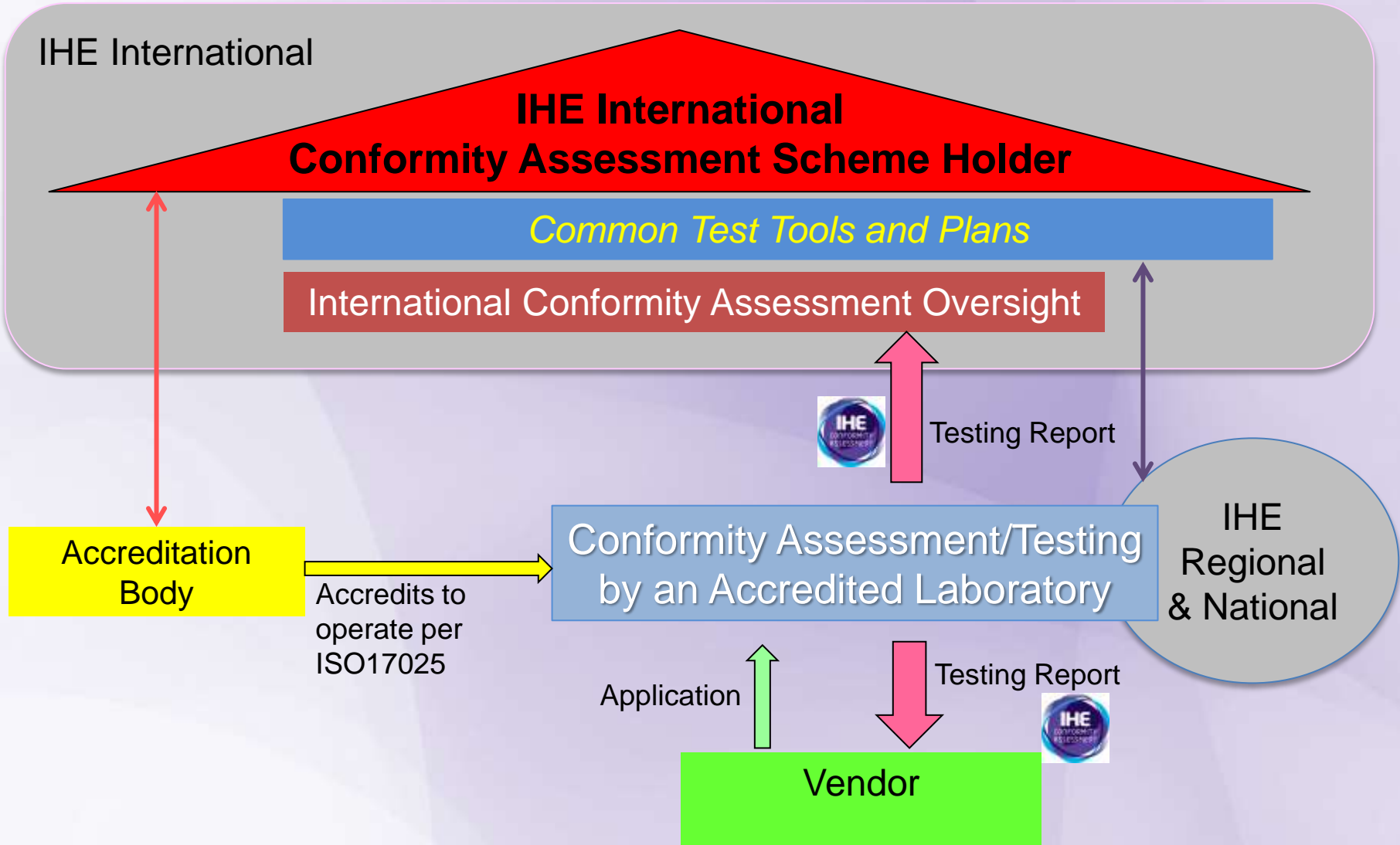


IHE[®]
EUROPE

CONNECTATHON
RENNES  **APRIL 8-12 2019**

- Focus on **Testing** → deliver a trusted  Test Report
- Enable countries/projects to **require and recognize** these  Test Reports (may perform additional project specific testing and also possibly add a certification process).
- Ensure international equivalency of  Test Reports and recognition of these for their trustworthiness:
 - A **single process** → IHE conformity assessment **scheme**
 - The **same test tooling** → provided by IHE International
 -  Test Reports published → by IHE International
- Multiple testing laboratories across the world accredited (ISO17025) & authorized by IHE Int'l (compete, convenient)

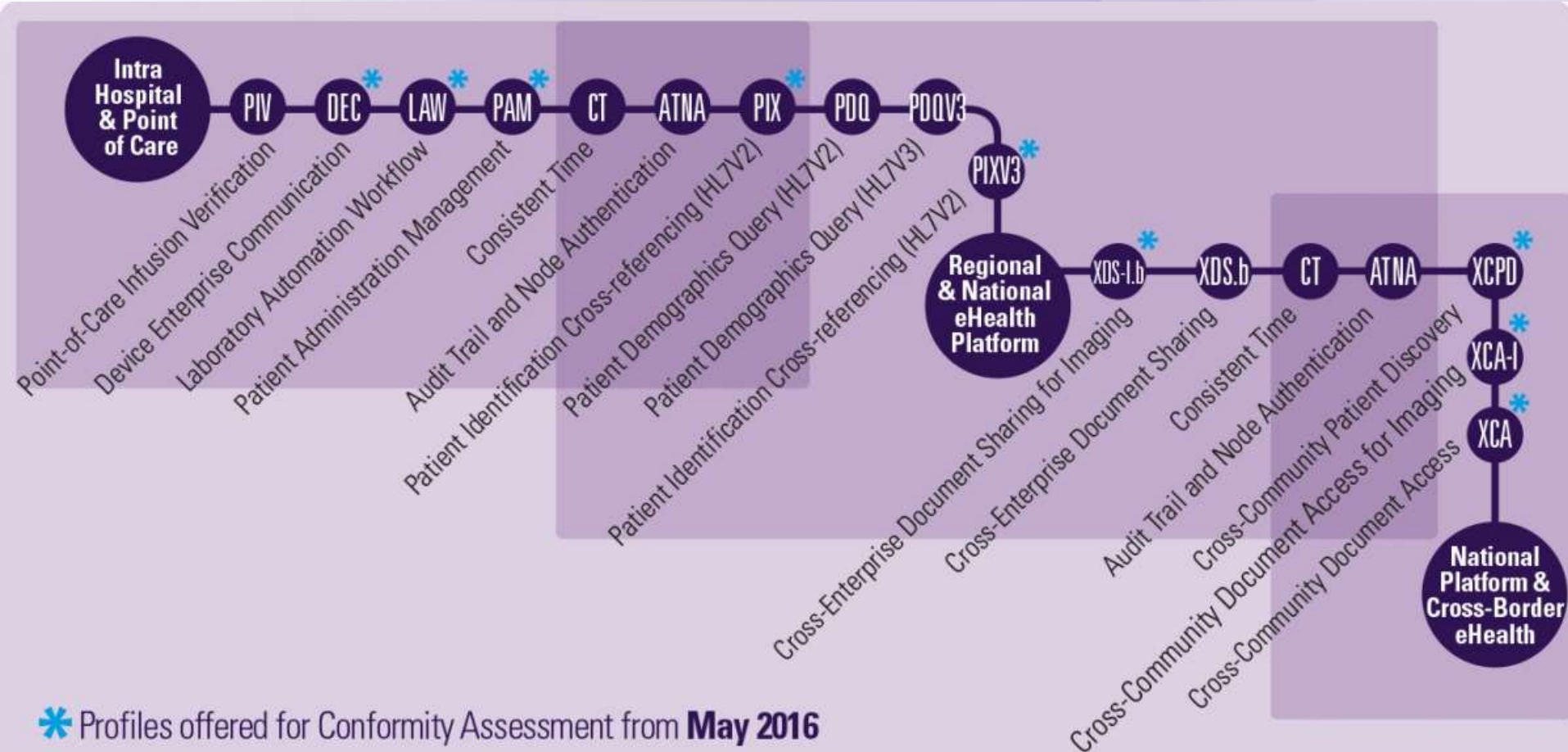
Concepts of IHE Conformity Assessment





Integrating
the Healthcare
Enterprise

IHE Conformity Assessment Scheme



* Profiles offered for Conformity Assessment from **May 2016**



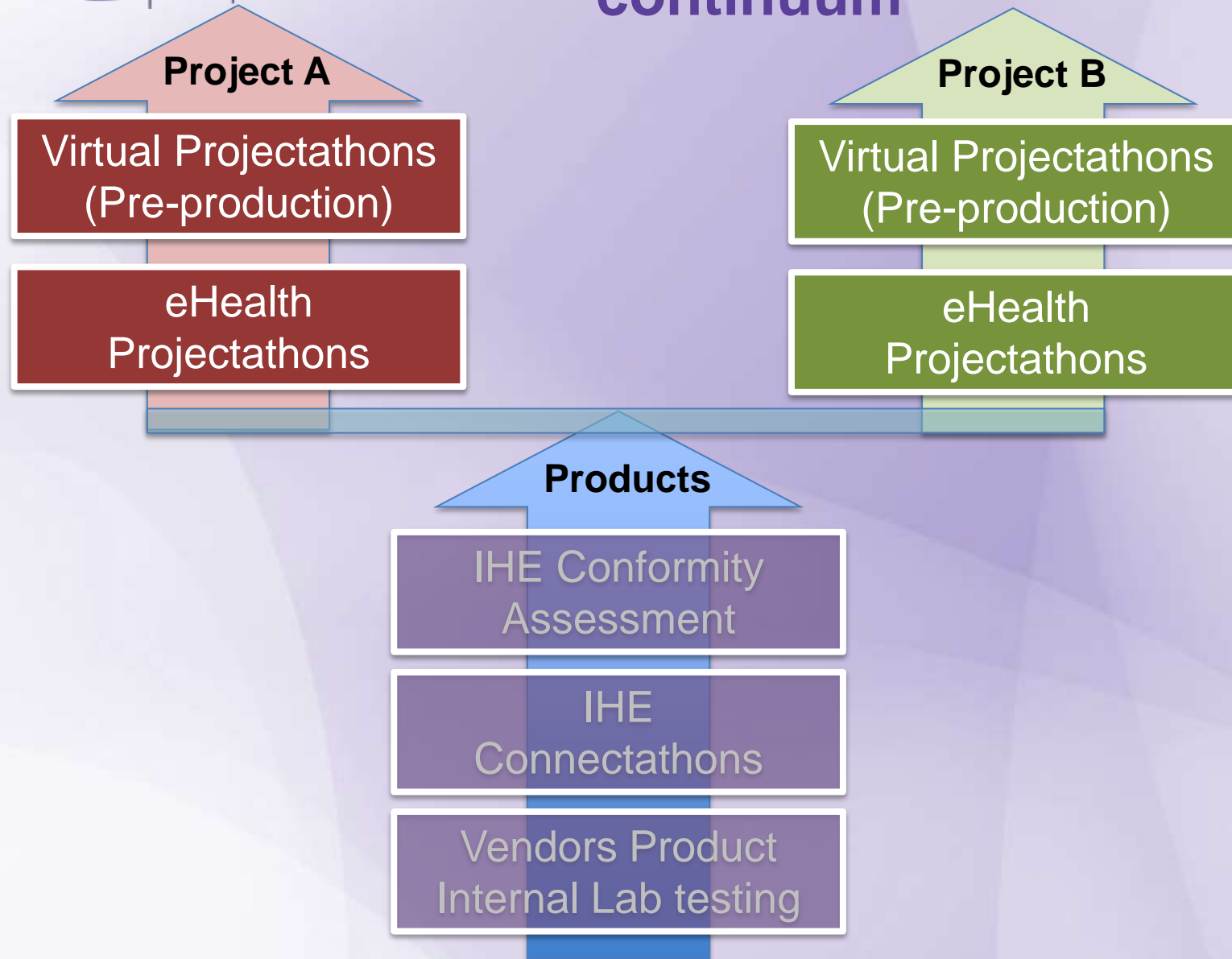
IHE
SERVICES

Building trust
in eHealth
interoperability



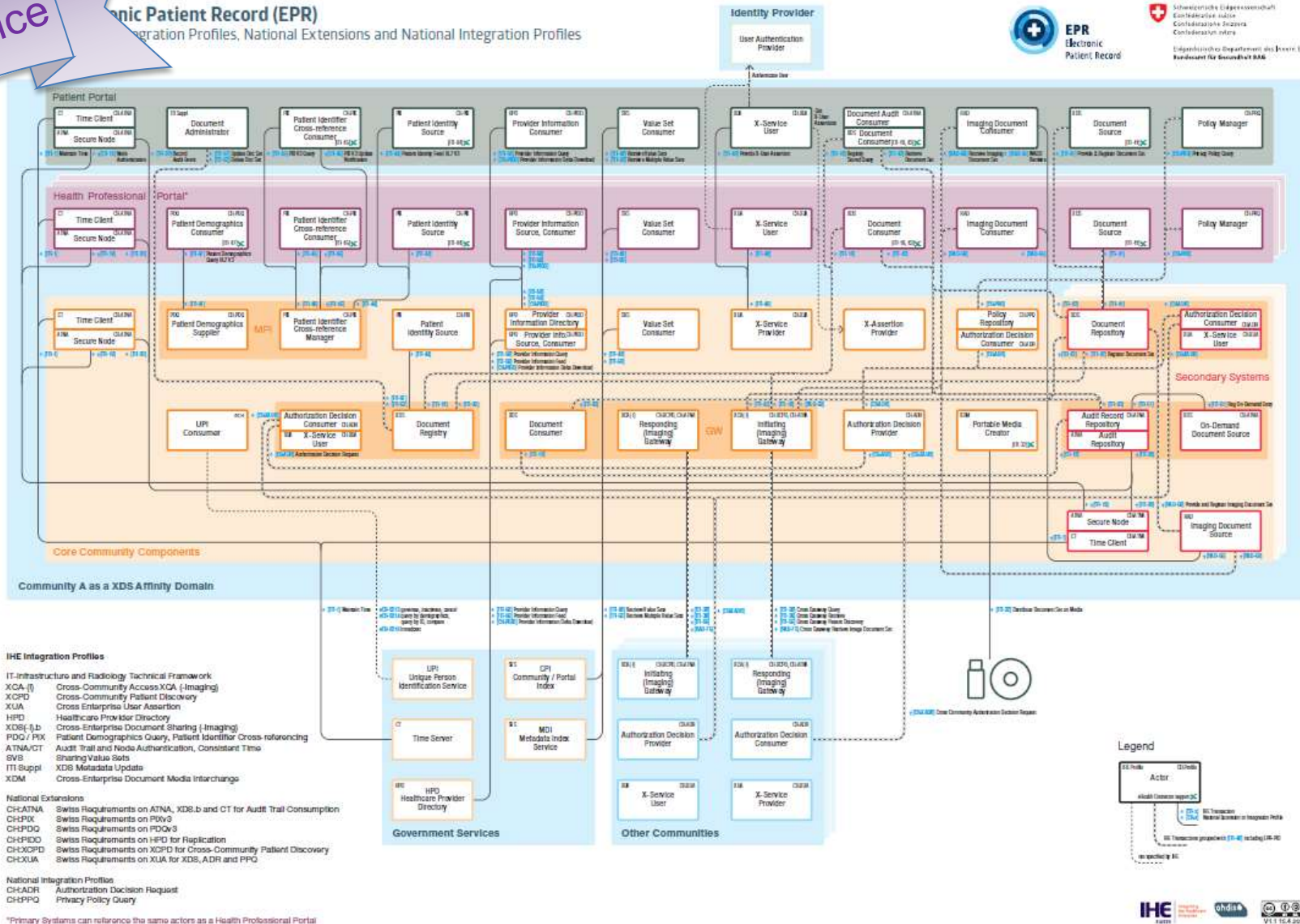
KEREVAL HEALTH LAB
TESTING
ACCREDITATION N° 1-2347
SCOPE AVAILABLE ON
WWW.COFRAC.FR

Overview of overall testing continuum



- *Projectathons* are peer to peer testing for “project” specific interoperability specifications:
 - based on IHE profiles
 - plus extensions to meet local, regional or national requirements.
- The need to be covered is to test healthcare information exchange in vitro prior to project implementations
- Examples: Swiss EPR project, EFA (Elektronische Fall Akte)

IHE BEST
Practice



IHE BEST
Practice

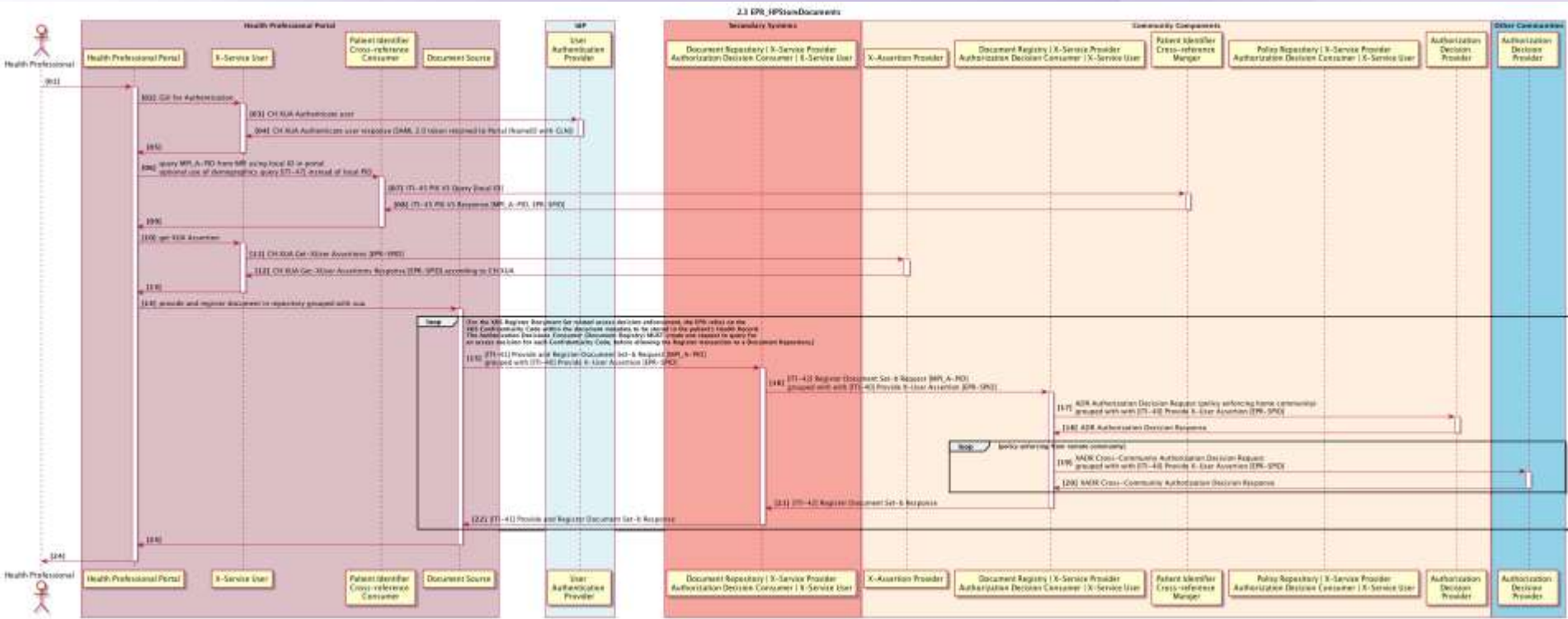
1st Projectathon September 2017



- EPR Reference platform built on IHE Gazelle®
- Platform planned to be used for certification in 2020

Virtual Projectathons for Pre-production Testing

- Testing is needed at project deployment level (on-boarding products at sites) to allow for interoperability production use
- The need to be covered is to secure proper end to end workflow testing (multi profile testing)
- Examples:
 - eHDSI PreProduction testing
 - Swiss EPR group testing
 - Sequoia Project CDA Validation



Constraint scoring | [Templates scoring](#)

This section of the scorecard gives you indications regarding the constraints which have been applied on your document during the validation process. Because some constraints are used several times, the scorecard also shows you how many distinct constraints were executed.

Summary

Summary of outcomes	574	44288
Overall conformity	574	44288
Conformity of unique constraints	0	790 / 2583

Types of constraints

Cardinality	4118	Context	553
Datatype	158	Fixed value	1038
Mandatory	1030	Vocabulary	28
Not Defined	3881		

Detail

Only the constraints which raised errors at least once are displayed below.

Fixed value

ccda112025	02
------------	----

Mandatory

ccda11488	1	ccda11231	1
ccda11257	1	ccda11259	1

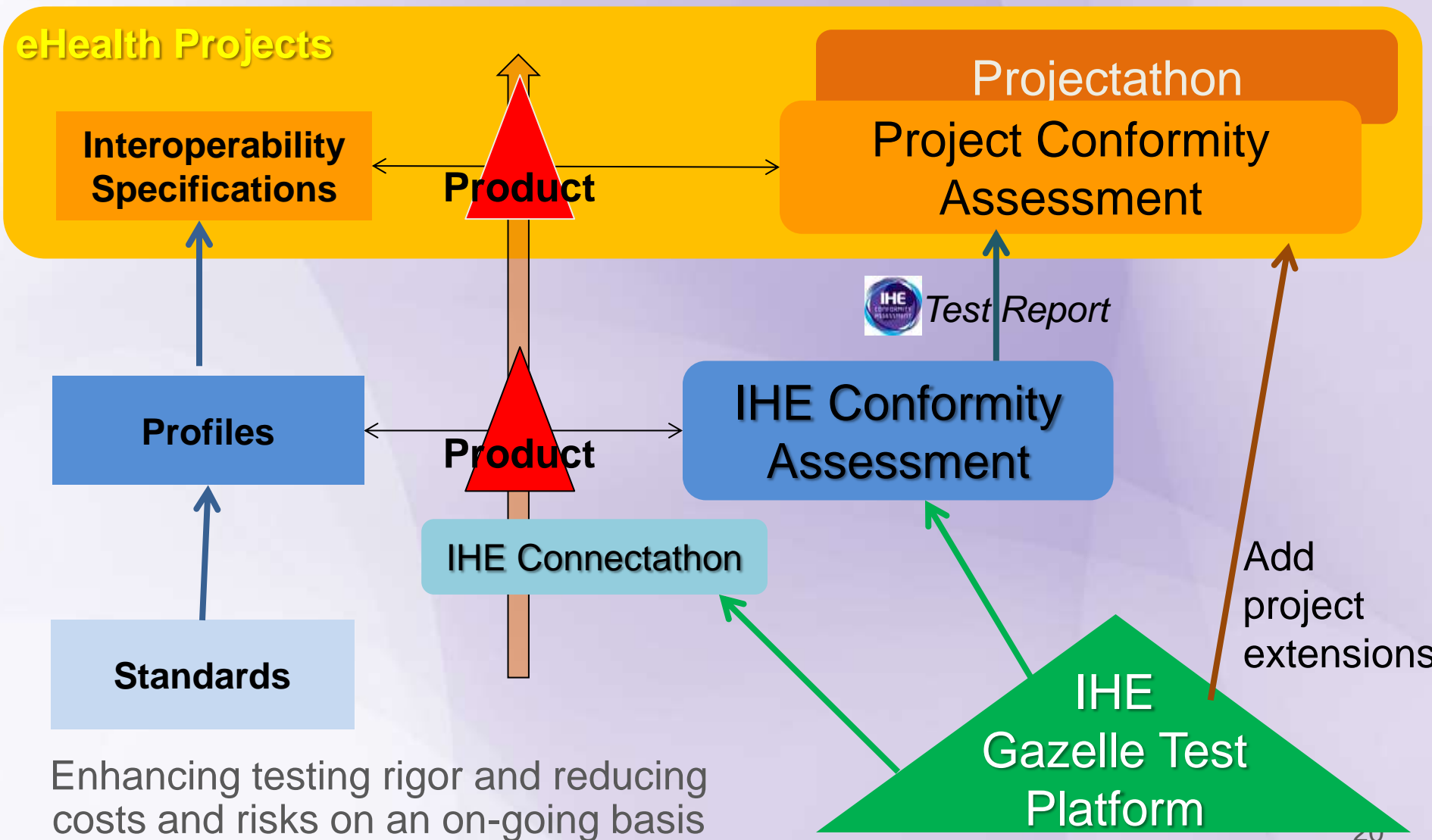
Untyped constraints

mm009	229	cdcd011	2004
cdcd008	811	dtts007	100 / 78

[About](#) | [Contact us](#) | [Issue Tracker](#) | Copyright 2017 IHE International | [Back to top](#) | English

THEOPHILE.PDF | Show All

A shared test platform: Connectathon, Conformity, and eHealth Projects



Enhancing testing rigor and reducing costs and risks on an on-going basis

- Formally created in 2012
- Built upon a long experience in interoperability testing management and experience with epSOS.
- IHE-Services has the goal to offer professional services to support IHE Members as well as national/regional authorities, local projects or any other organizations deploying IHE profiles for their eHealth projects

**1. Connectathons
and Projectathons**

**2. Gazelle Test Bed
and Tools**

3. Training

**4. Virtual
Connectathons**

**5. Consulting / IoP
Specifications**

**6. Tailored Test
Tools**

**9. Conformity
Assessment/Report**

**8. Interoperability
Showcases**

**7. Tailored Test
Plans**

IHE

Integrating
the Healthcare
Enterprise

Changing the Way Healthcare **CONNECTS**

<http://www.ihe.net>

Alexander Berler

IHE Services Director

Alexander.berler@ihe-europe.net

Eric Poiseau

IHE-Europe Technical Manager

Eric.poiseau@ihe-europe.net