



Integrating
the Healthcare
Enterprise

IHE-Europe webinar

How vendors work together at national level across hospitals

February 2024

Introduction presenters

- ◆ Vincent van den Berg
 - ◆ Digital Health Innovator @ChipSoft & Vendor co-chair @IHE Netherlands
- ◆ Jasper van der Zwaag
 - ◆ Interoperability & Data Exchange Consultant @ChipSoft
- ◆ Koen Arnoldus
 - ◆ Interoperability Success Lead Netherlands @Epic

Questions? Feel free to ask

Agenda

1. Introduction and welcome
2. Collaboration of ChipSoft & Epic
3. Future opportunities
4. Future of data exchange in the Netherlands
5. Q&A and discussion

Agenda

1. Introduction and welcome
2. Collaboration of ChipSoft & Epic
3. Future opportunities
4. Future of data exchange in the Netherlands
5. Q&A and discussion

IHE Netherlands new board



- ◆ New board, new vision:
“proudly copied from”
- ◆ Members (LTR)
 - ◆ Vincent van den Berg: Vendor co-chair
 - ◆ Evert Sanders: User co-chair
 - ◆ Wim de Koning: Vice vendor co-chair
 - ◆ Robert Breas: Treasurer

Strategy: healthy growth of the ecosystem



IHE Netherlands within ecosystem

General

- ◆ Think Global, act National
- ◆ Dutch community building
- ◆ Marketing: IHE ≠ XDS
- ◆ Education: IHE Academy
- ◆ Several events: Connectathon, HL7 WGMs, Local (non)gov events

Role IHE within ecosystem

- ◆ Awareness IHE methodology
- ◆ User < > Vendor (co-creation)
- ◆ National Test and Validation Centre
- ◆ Epic: International member *
- ◆ ChipSoft: Vendor co-chair IHE NL

* <https://open.epic.com/Tech/GetTechSpec?spec=CareEverywhere%20IntegrationStatement.pdf>

Agenda

1. Introduction and welcome
2. Collaboration ChipSoft & Epic
 - i. Background of the collaboration
 - ii. Practical impact
 - iii. Technical background
 - iv. Outcomes
3. Future opportunities
4. Future of data exchange in the Netherlands
5. Q&A and discussion

2 | Collaboration | Background

- ◆ Collaboration started in the region of Friesland in the northern part of the Netherlands
- ◆ Two main hospitals formulated an ambition to strengthen cooperation from 2017 forward



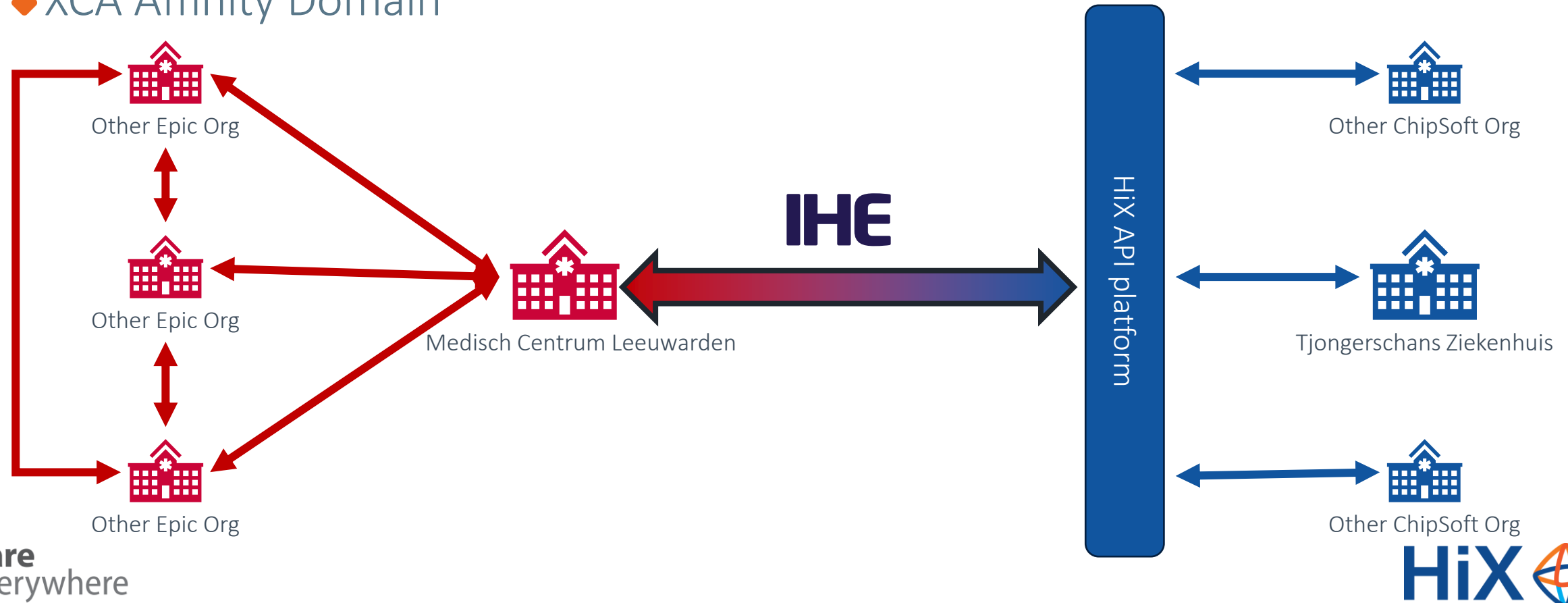
Integrating
the Healthcare
Enterprise

2 | Collaboration | Practical impact

- ◆ The collaboration formed around several principles:
 - ◆ We need to **collaborate on several topics**, therefore we need information from both hospitals
 - ◆ In some cases, we need to **actually refer** patients to a different hospital
 - ◆ We **don't want to burden** the patient and the professional with additional administrative load
 - ◆ We wanted to use proven **international standards**
- ◆ In the period 2018 – 2022, several things were realised:
 - ◆ **Stage 1: Viewing** of relevant data to facilitate users in getting access to relevant data
 - ◆ Limited impact on work processes
 - ◆ **Stage 2: Intuitive digital referring** from MCL to Tjongerschans and back, for surgical cases
 - ◆ Inclusion of a **standardised patient related data set** (Dutch patient summary)
 - ◆ Inclusion of (unstandardised) **documents**
 - ◆ Impact on processes

2 | Collaboration | Technical Background

- ◆ Different gateway architectures between vendors
- ◆ XCA Affinity Domain



2 | IHE transactions for Pull (XCA)

- ◆ Cross Gateway Patient Discovery [ITI-55]
 - ◆ “Do you know this patient, and how should we address them?”
- ◆ Cross Gateway Query [ITI-38]
 - ◆ “What documents do you have available for patient 12345?”
- ◆ Cross Gateway Retrieve [ITI-39]
 - ◆ “Could you give me Document ABC?”

2 | Cross Gateway Patient Discovery

- ◆ Heavy reliance on Dutch National Citizen ID (BSN)
 - ◆ Only verified numbers may be used
- ◆ Patient consent is checked by the source:
 - ◆ Epic: Registry
 - ◆ ChipSoft: Central Registry and decentralized Repositories

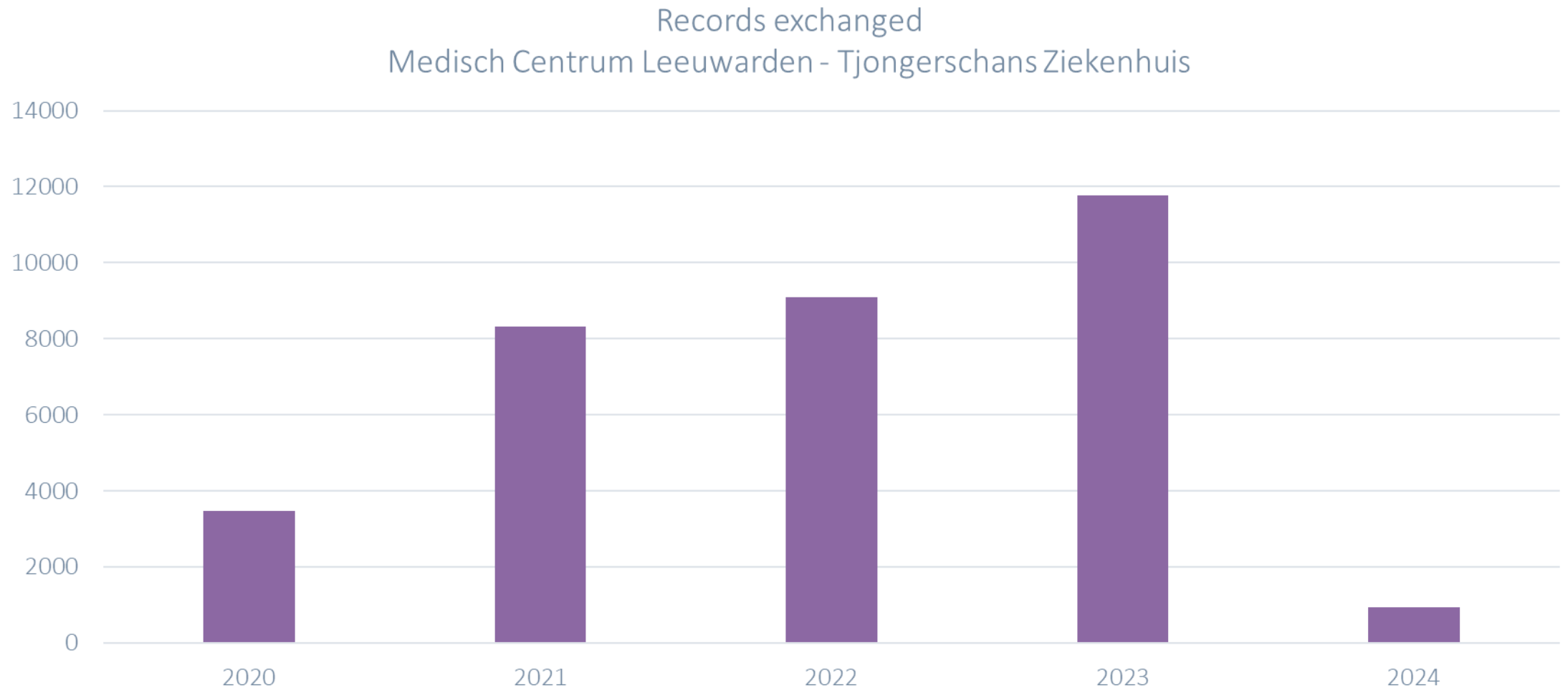
2 | Cross Gateway Retrieve

- ◆ Documents exchanged:
 - ◆ Dutch Patient Summary (BgZ) in CDA format
 - ◆ Correspondence in PDF/A format
 - ◆ Radiology Reports in either PDF/A or CDA format
- ◆ Testing various other result-based documents
 - ◆ For example: anatomic pathology and microbiology

2 | IHE Transaction for Push (XDR)

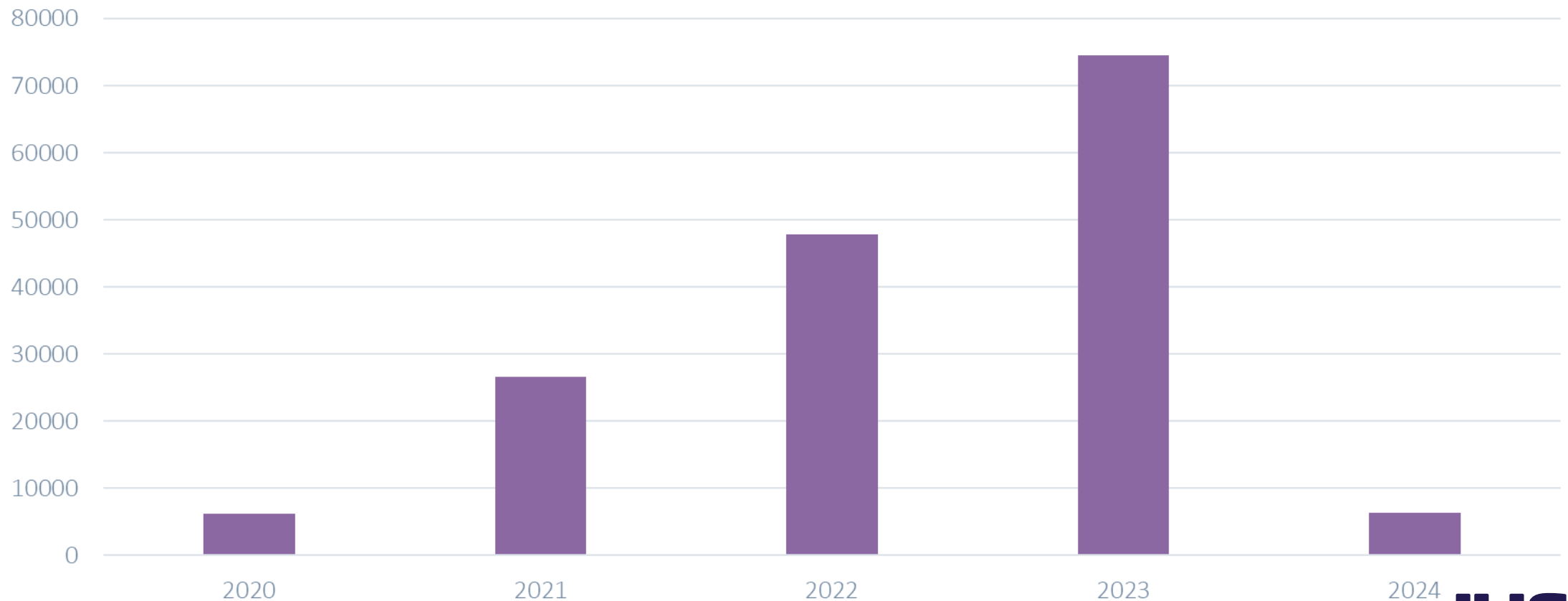
- ◆ Cross-Enterprise Document Reliable Interchange (XDR)
 - ◆ Provide and Register Document Set-b [ITI-41]
- ◆ Removing fax and/or unsecure email by sending letter directly
 - ◆ No (explicit) consent required
 - ◆ Automatic registration of new patients
 - ◆ Option to include additional attachments (Patient Summary in CDA)

2 | Collaboration | Outcomes



2 | Collaboration | Outcomes

Records Exchanged
Medisch Centrum Leeuwarden - ChipSoft



Agenda

1. Introduction and welcome
2. Collaboration ChipSoft & Epic
- 3. Future opportunities**
4. Future of data exchange in the Netherlands
5. Q&A and discussion

3 | Future opportunities

Within the Netherlands

- ◆ By working together, there is a ~**90%** coverage of Dutch hospitals included in this process
- ◆ **Increasing** the use-cases on which ChipSoft, Epic and other softwareproviders can cooperate
- ◆ Collaborate on adoption and creation of **intern. standards**

Outside the Netherlands

- ◆ There is an increased wish by care institutions to cooperate **internationally**
- ◆ The **European Health Data Space** is going to require international interoperability
- ◆ Focus on aligning with the Dutch **National Contact Point** (NCP)

Agenda

1. Introduction and welcome
2. Collaboration ChipSoft & Epic
3. Future opportunities
4. **Future of data exchange in the Netherlands**
5. Q&A and discussion

4 | Future of data exchange in the Netherlands

Dutch Technical Agreement

- ◆ Notified Pull: Exchanging FHIR Data using a generic Notified-Pull mechanism (STU3)
- ◆ Twiin: Dutch trusted exchange framework and common agreement (inspired by TEFCA USA)





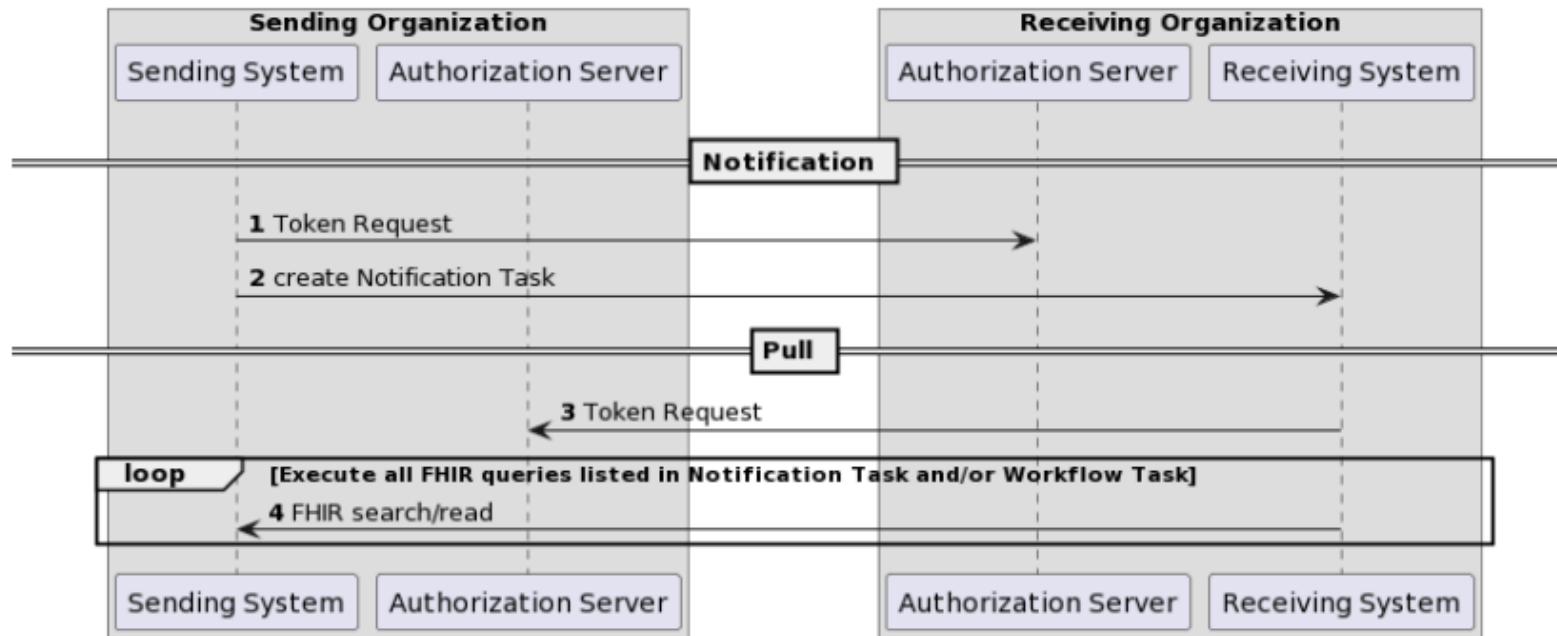
Twiin



TA Notified Pull

Home > TA Notified Pull

Notified Pull using OAuth and FHIR



4 | Future of data exchange in the Netherlands

Dutch Technical Agreement

- ◆ Notified Pull: Exchanging FHIR Data using a generic Notified-Pull mechanism (STU3)
- ◆ Twiin: Dutch trusted exchange framework and common agreement (inspired by TEFCA USA)

The Twiin logo consists of the word "twiin" in a lowercase, sans-serif font. The letters "t", "w", and "i" are dark blue, while the letters "i" and "n" are orange.

FHIR R4

- ◆ IHE profile: Sharing of IPS (sIPS) based on FHIR R4
 - ◆ Publishing an IPS
 - ◆ On Demand Access to an IPS
 - ◆ Retrieving an IPS
 - ◆ Pushing an IPS to a Recipient
- ◆ Notified-Pull? (HL7 international)






https://profiles.ihe.net/ITI/sIPS/index.html



Integrating
the Healthcare
Enterprise



Sharing of IPS (sIPS)

1.0.0 - Trial-Implementation 

[sIPS Home](#)[Volume 1](#) ▾[Volume 3](#)[Artifacts](#)[Other](#) ▾[PCC Excerpt](#)[Table of Contents](#) > [Sharing of IPS \(sIPS\) Home](#)[<prev](#) | [bottom](#) | [next>](#)

This page is part of the Sharing of IPS (sIPS) (v1.0.0: Publication) based on [FHIR R4](#). This is the current published version. For a full list of available versions, see the [Directory of published versions](#)

Sharing of IPS (sIPS) Home

Official URL: https://profiles.ihe.net/ITI/sIPS/ImplementationGuide/ihe.itl.sips	Version: 1.0.0
Active as of 2023-11-17	Computable Name: IHE_ITI_sIPS

Agenda

1. Introduction and welcome
2. Collaboration ChipSoft & Epic
3. Future opportunities
4. Future of data exchange in the Netherlands
5. Q&A and discussion

5 | Q&A and discussion





Integrating
the Healthcare
Enterprise

Thank you!